

Wolftech Lab Environment

What:

WolfTech Active Directory is a Microsoft Windows-based (not Novell!) management environment created by the College of Engineering for managing faculty, staff, graduate, and undergraduate computing resources including computer workstations, servers, printers, and user accounts at NC State. Other member colleges currently include the College of Agriculture and Life Sciences, the College of Education, the College of Natural Resources, the College of Veterinary Medicine, the College of Physical and Mathematical Sciences, and the College of Design.

Where/When:

- Digital Design Lab in Fall 2008 – Pilot new environment
- Based on pilot feedback, tentatively migrate 2104 & Fashion Studio in Spring 2008
- Faculty/Staff/Graduate computers Spring/ Summer 2009
- Textiles Engineering Computing Lab Fall 2009

Advantages:

- Faster computer startup times
- Much faster login times
- Similar to office workstation environment - applications in Start Menu
- Reduce/Eliminate quota related errors including:
 - Students losing work due to full K: drive
 - Applications not working properly due to full M: drive
- Unity account integration – unlike the TX domain, password are synchronized with Unity account password change (<http://www.ncsu.edu/password/>)
- Class groups by section (containing all class members) available for selective access to resources
- Textiles IT Staff has full control over desktop environment
- Close-knit campus IT community available for support purposes

Disadvantages:

- No Roaming Profile (personal settings will not follow user from computer to computer)
 - Browser bookmarks
 - Application preferences
 - Desktop background image
 - Email Setup
- No Auto-save of files from 'My Documents' and 'Desktop' to K: drive

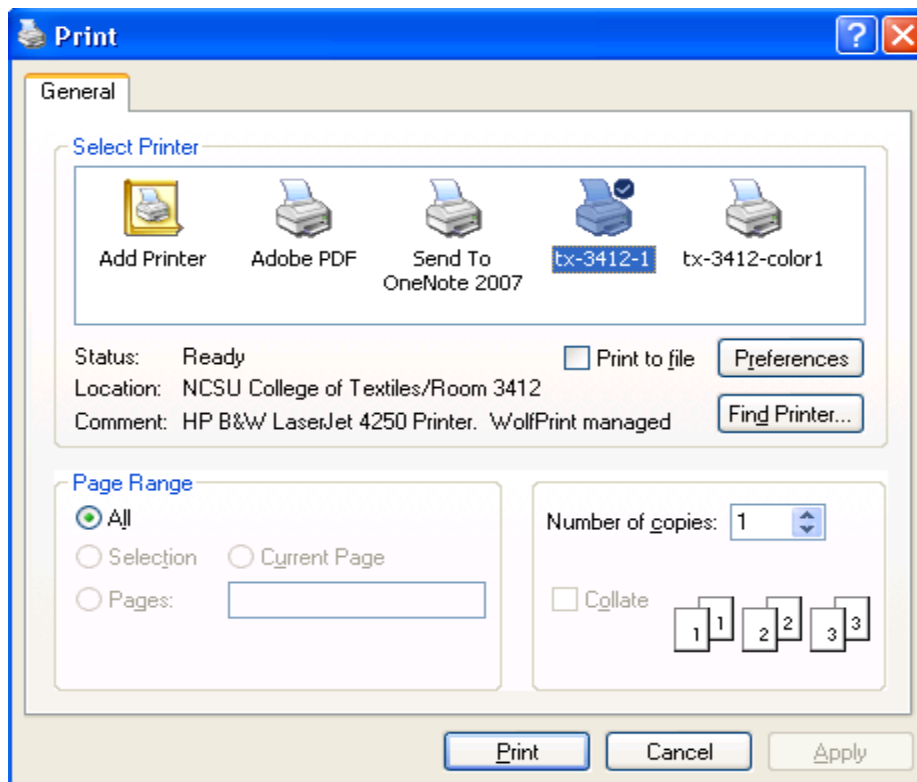
Special Note:

- Initial Password reset required for login to Wolftech Lab
- Login Screen has changed (see screen shots below)
- Printing via PrintAFile (see screen shots below)

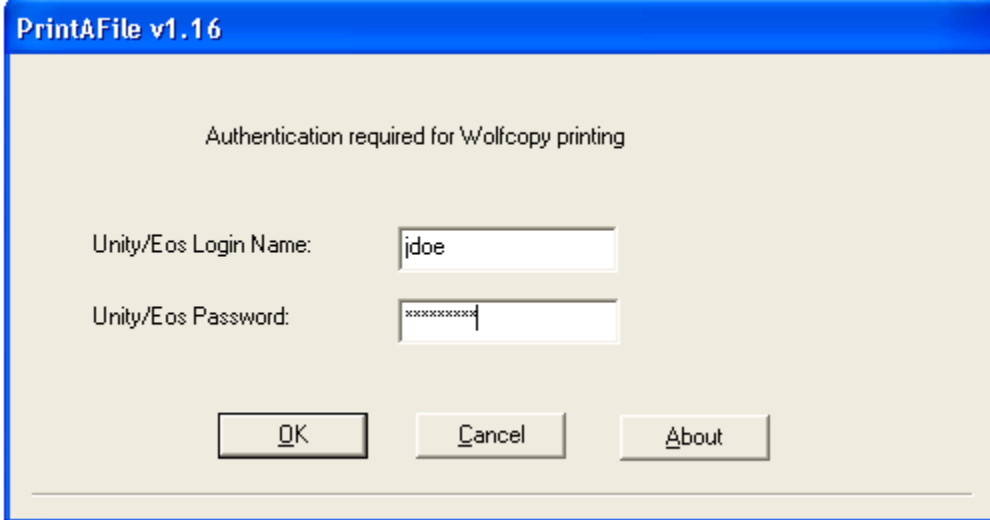
New Login Screen – Choose 'WOLFTECH' domain:



PrintAFile Accounted Printing (wolfcopy managed printers):



Authenticate with Unity Login/Password:



PrintAFile v1.16

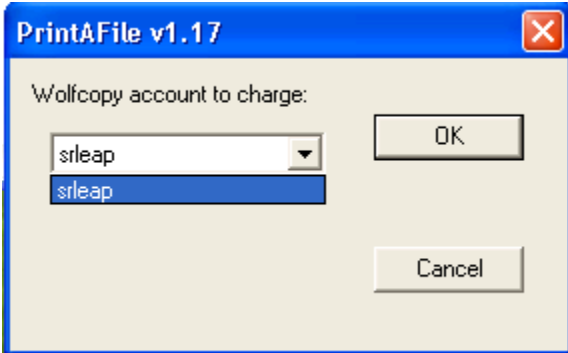
Authentication required for \wolfcopy printing

Unity/Eos Login Name:

Unity/Eos Password:

This is a Windows-style dialog box with a blue title bar. The main area is light beige. It contains two text input fields for login and password, and three buttons at the bottom.

Specify account to charge:



PrintAFile v1.17

\wolfcopy account to charge:

This is a smaller Windows-style dialog box with a blue title bar and a red close button. It features a dropdown menu for selecting an account and two buttons.